

Graphic design was funded by the European Union's Internal Security Fund — Police.

Graphic design represents the views of the author only and is his/her sole responsibility. The European Commission does not accept any responsibility for use that may be made of the information it contains.



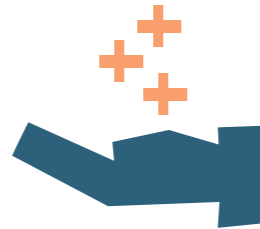
WHISTLEBLOWER PROTECTION

The new EU Directive



WHISTLEBLOWER PROTECTION

The new EU Directive



BENEFITS

Whistleblowers are essential players to detect and prevent corruption and other malpractices.

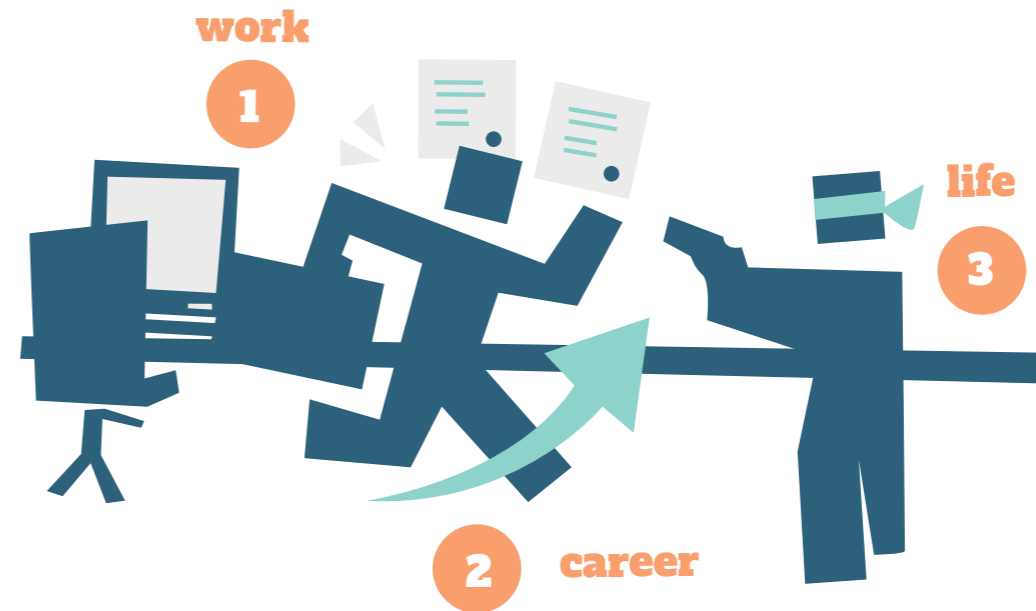


WHISTLEBLOWER PROTECTION

The new EU Directive



Whistleblowers are often discouraged from reporting their concerns for fear of retaliation.



WHISTLEBLOWER PROTECTION

The new EU Directive



Whistleblowers protection enhances fundamental democratic values.



WHISTLEBLOWER PROTECTION

The new EU Directive



FEB 14
2017

Open **Public consultation**
on **Whistleblower protection**

OCT 24
2017

Proposal for a DIRECTIVE on
the protection of persons reporting
on **breaches of Union law**

APR 16
2019

**European Parliament
resolution** on the role of
whistleblowers in the
protection of EU's
financial interests

**MAR 3 -
MAY 29**
2017

European Parliament Resolution
on legitimate measures to protect
whistleblowers acting in the public
interest when disclosing the
confidential information of
companies and public bodies

APR 23
2018

Adoption by the European
Parliament of the **Directive**

WHISTLEBLOWER PROTECTION

The new EU Directive



WHO



A person working in the private or public sector who have acquired **information** on wrongdoings in a work-related context.

WHEN

A **breach or abuse** of EU law is acquired through a work - related activity.

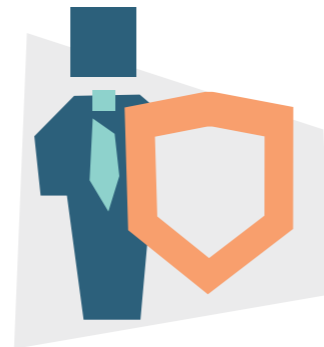


WHISTLEBLOWER PROTECTION

The new EU Directive



WHAT



- ✓ **IMMUNITY FROM LIABILITY**
- ✓ **REVERSAL OF THE BURDEN OF PROOF**
- ✓ **PROHIBITION OF RETALIATION**
- ✓ **DISSUASIVE AND EFFECTIVE PENALTIES**
- ✓ **FINANCIAL AND PSYCHOLOGICAL SUPPORT**
- ✓ **DUTY OF CONFIDENTIALITY**
- ✓ **DAMAGES COMPENSATIONS**
- ✓ **CHOICE OF APPROPRIATE AND FAST REPORTING CHANNELS**

WHISTLEBLOWER PROTECTION

The new EU Directive



HOW

INTERNAL

Public sector bodies and private entities with more than 50 employees should establish appropriate internal reporting channels and procedures that guarantee full confidentiality.

EXTERNAL

Member States shall identify the competent authorities to establish independent channels with dedicated staff members, user friendly information and adequate record keeping of all reports.

PUBLIC

Public disclosure is allowed if internal and external channels cannot reasonably be expected to work correctly or the whistleblower believes there is an imminent danger to public interest or a risk of retaliation.



REPORTING CHANNELS